

*Annual Conference
2016*



*Where next for
widening
participation in HE?*



“Too many in our country are held back –
often invisibly – because of their
background or the colour of their skin”

“Only 1 in 10 of the poorest white
working class boys enter higher
education”

HE White Paper and WP

WP Aims

- Doubling proportion of disadvantaged students by 2020
- Increasing number of BME students by 20% by 2020
- Addressing differences in student outcomes

WP Change Factors:

- Disabled Students Allowance changes
- Abolition of grants , NHS bursaries and extended access to loans
- Maintenance loans for part-time and Master's students
- Loans for STEM students on “Equivalent Level Qualifications”.
- Sharia compliant loans system
- Reduction of Student Opportunity funding by up to 50%, including removal of the WP element
- A new £210 million National Collaborative Outreach Programme
- Degree Apprenticeship Development Funding

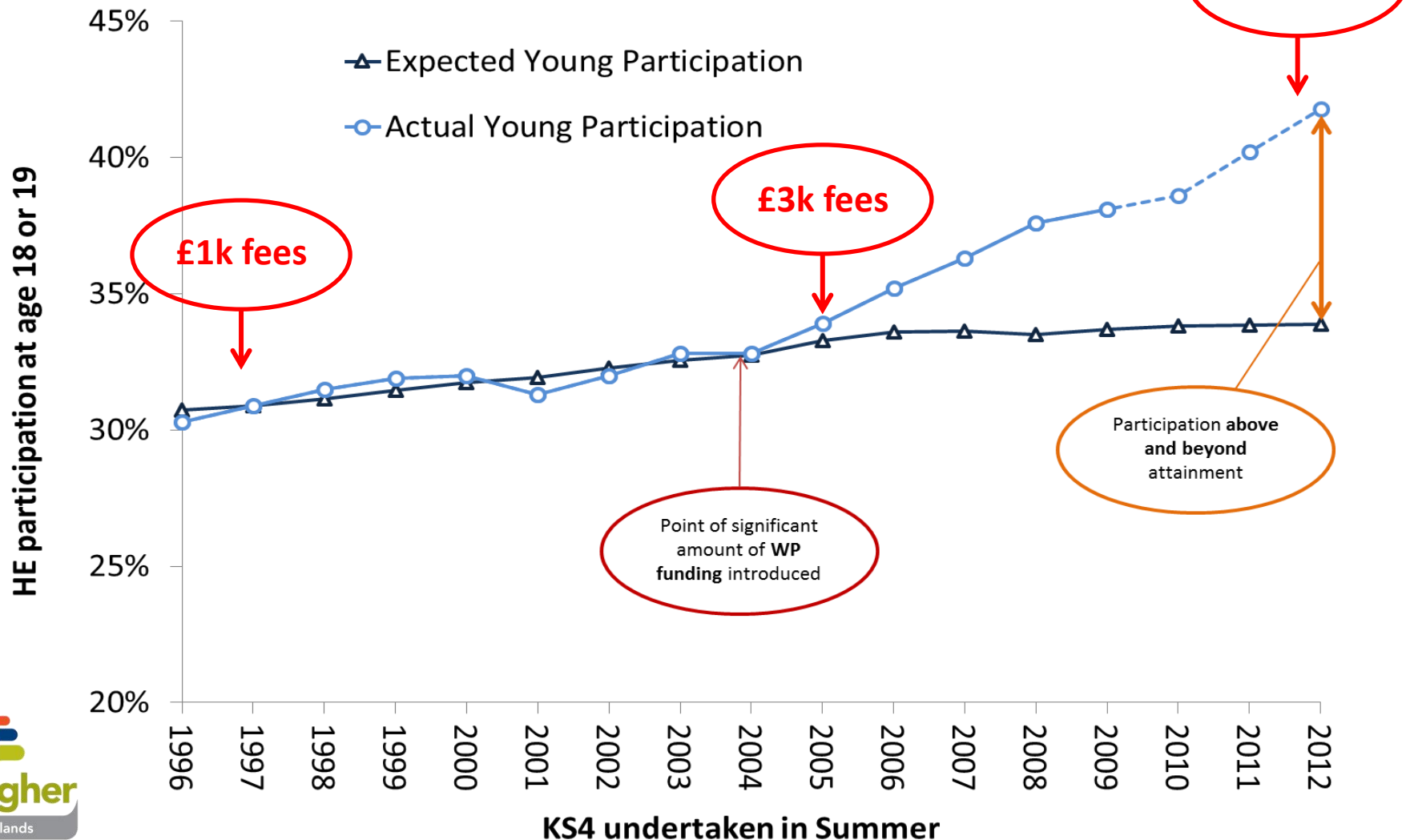
HE White Paper: Wider Changes

Teaching Excellence Framework: An Ofsted for universities?

- Assess higher education providers on their educational standards
- Give students better information about what they can expect from their course
- Give universities a financial and reputational incentive to improve teaching:
 - Introduction of “student premium” funding
 - Linking fee rises to quality
- “Office for Students”

Progress...against the odds?

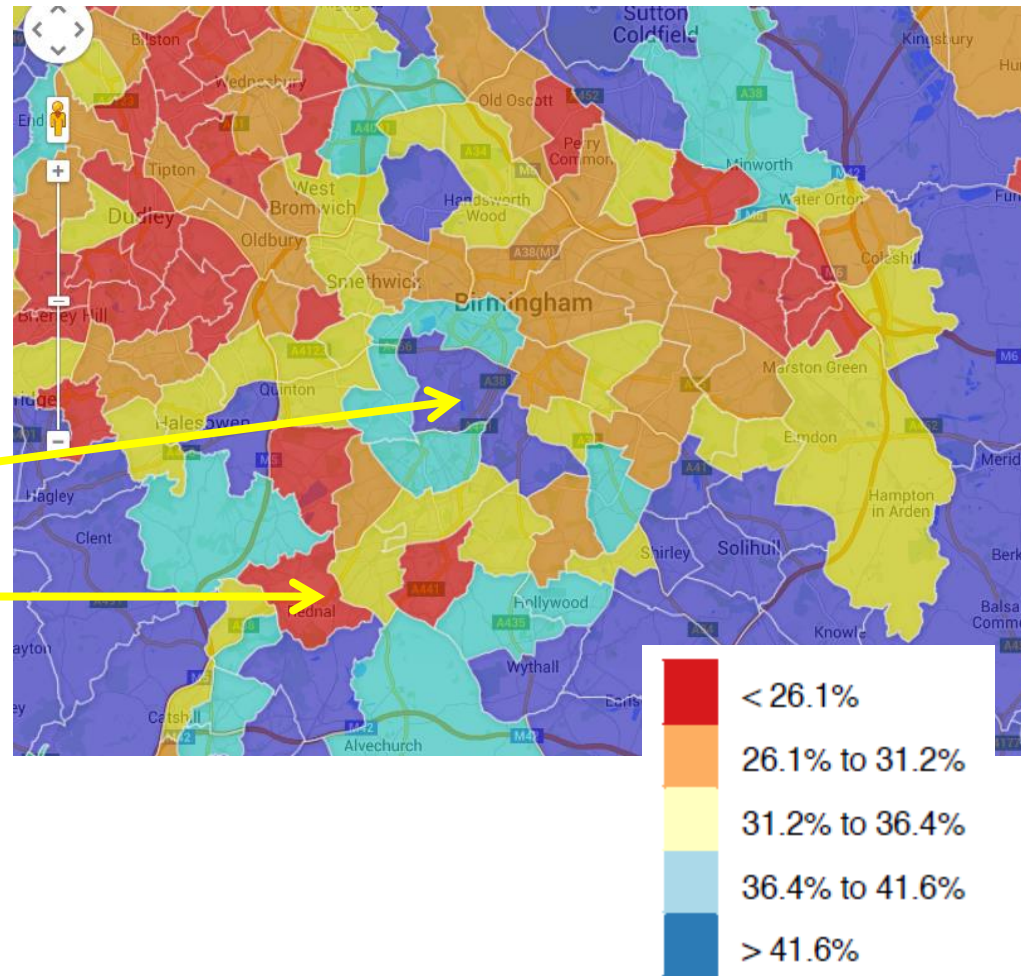
Young participation above and beyond trends in GCSE attainment



And not everyone: **POLAR**

HEFCE's "Participation of Local Areas" data

- % of 18 / 19yr olds progressing to all forms of HE in a 5 year period
- Quintiles: 1= low 5 = high
- LEA / Ward Level
- Large variations map to other measures of inequality:
 - 64% Edgbaston
 - 17% Longbridge



Missing Students: GCSEs and HE?

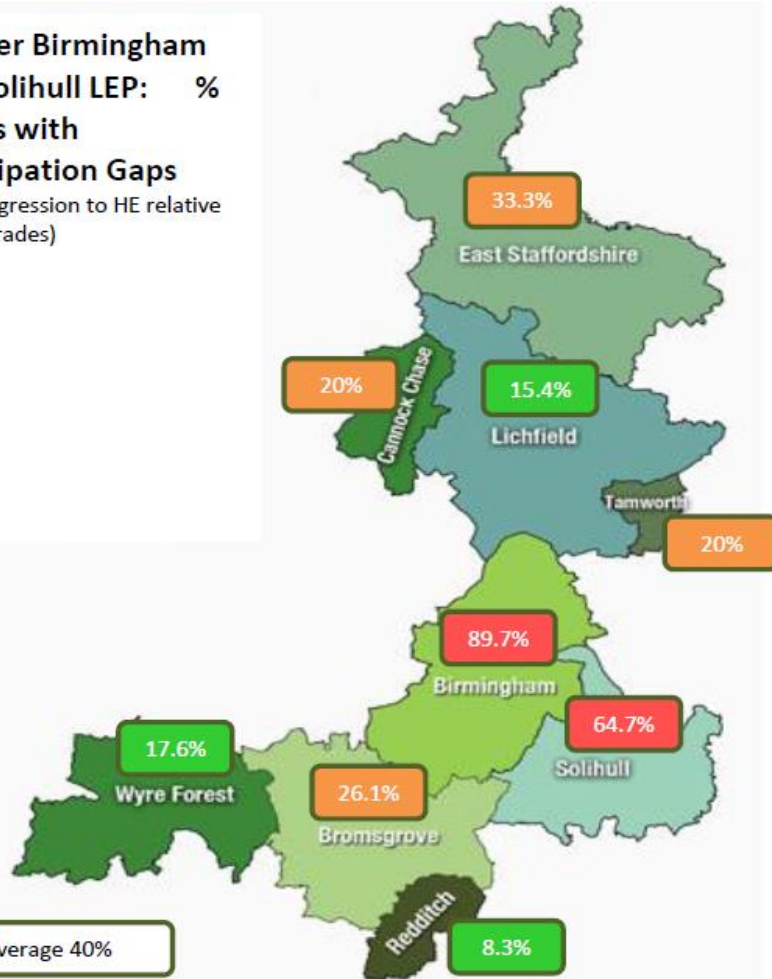
30%

of Greater Birmingham and Solihull wards have relatively low youth progression rates³ to HE (34 out of 180)

40%

of Greater Birmingham and Solihull wards have high participation gaps, relative to GCSE attainment (72 out of 180)

Greater Birmingham and Solihull LEP: % Wards with Participation Gaps
(low progression to HE relative to KS4 grades)



HEFCE have ranked all England wards (7900+) in terms of participation gaps. Four wards in Birmingham are in top ten wards in England in terms of high participation gaps (low progression to HE relative to KS4 grades). The top ten wards in Greater Birmingham & Solihull LEP are from Birmingham:

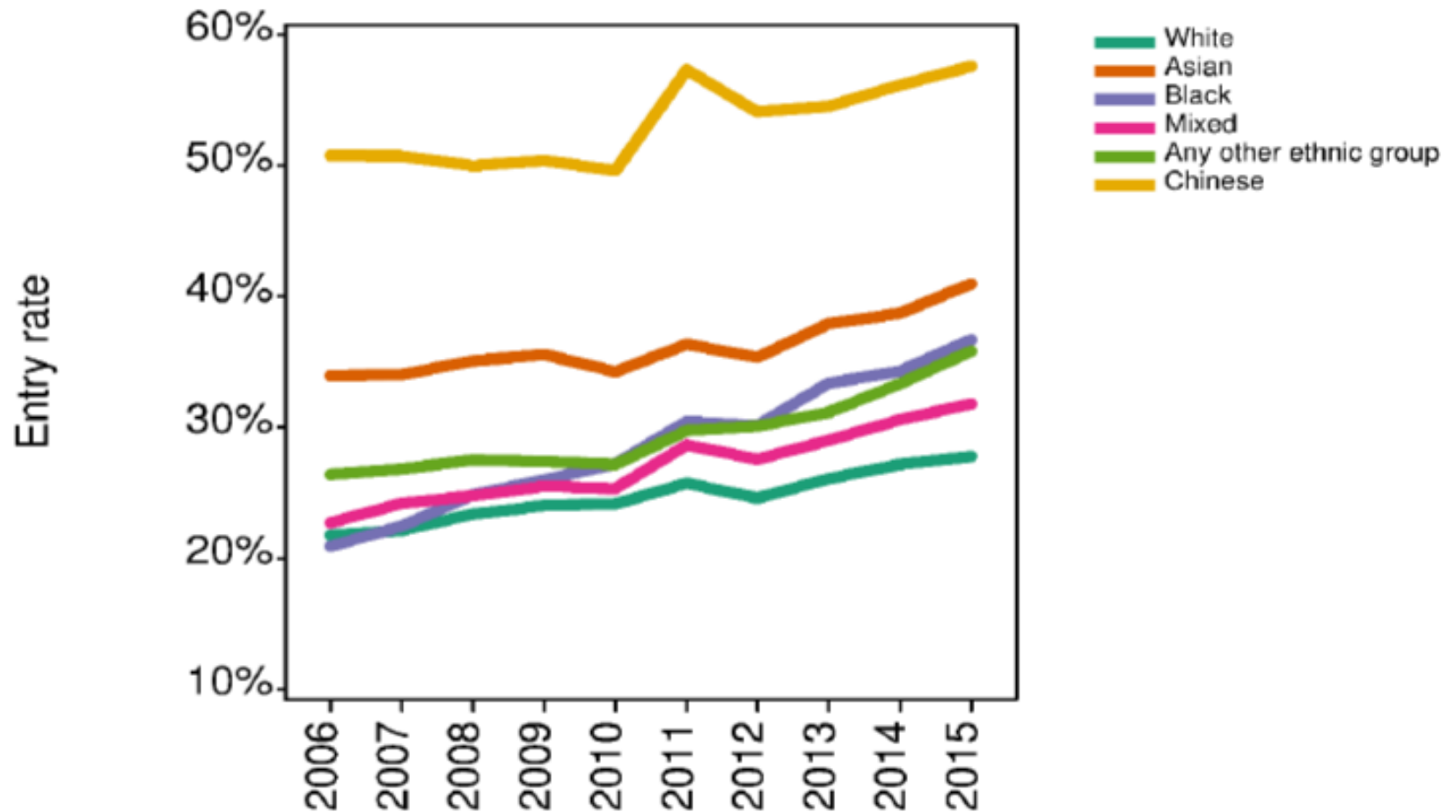
Ward	Participation Gap
Bartley Green	-11.2
Nechells	-7.0
Small Heath	-5.8
Washwood Heath	-5.9
Sparkbrook	-5.8
Longbridge	-4.2
Kingsbury	-4.5
Northfield	-4.7
Sparkhill	-4.1
Billesley	-3.8

Bartley Green has the biggest gap in England between what GCSE outcomes suggest and what actual progression to HE is.

Bartley Green is a predominantly white, working class area

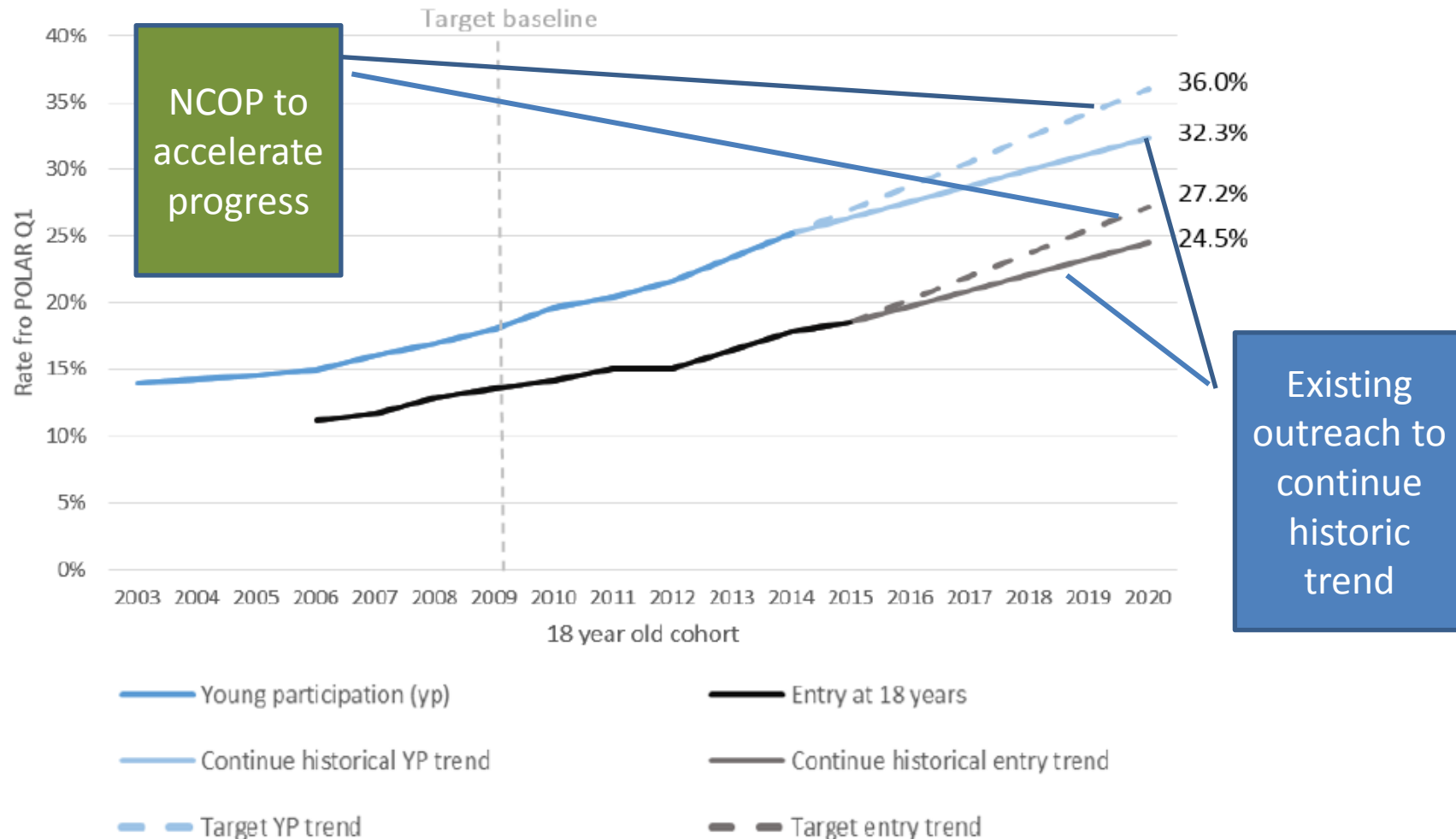
And other factors...

Entry rates for English 18 year old state school pupils by ethnic group



And not fast enough...

PM's 2020 Young Participation Target



NCOP: The New Aimhigher?

Sort of...but a more targeted and focused approach

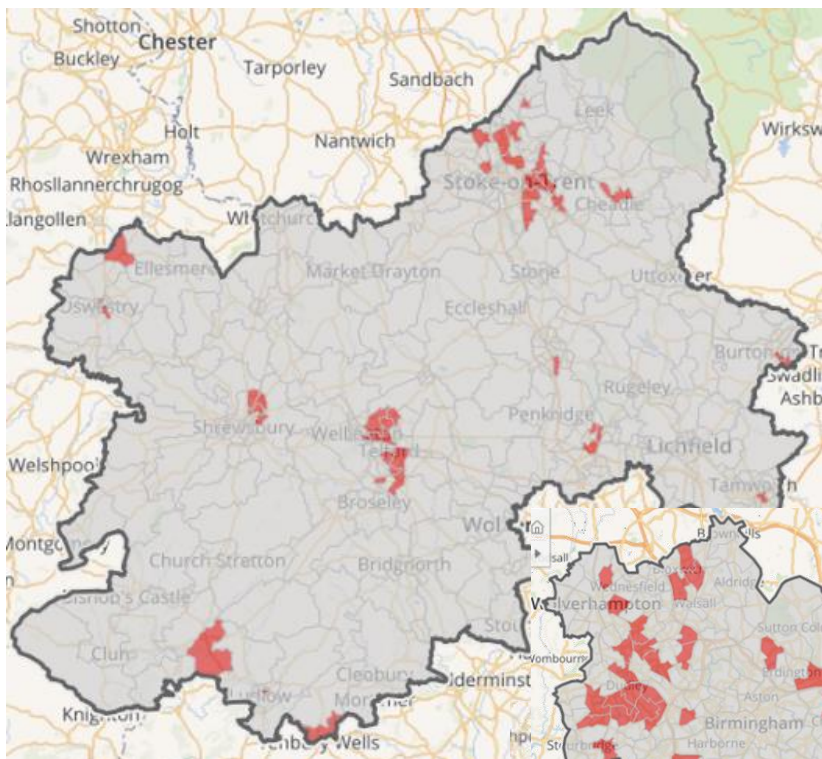
- Builds on evidence
- Supports collaboration
- To build on and complement broader outreach
- £30m in 2016-17
- £60m in 2017-18, 2018-19 and 2019-20
- Activity in POLAR Q1 and GCSE to HE Gaps wards

NCOP: New Dimensions

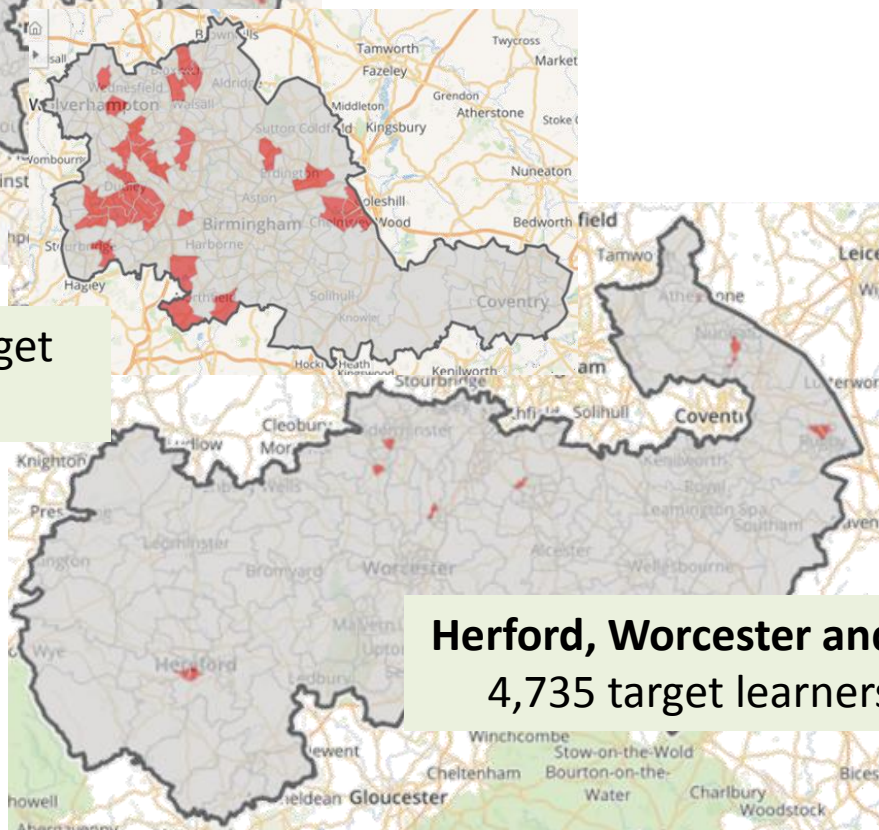
- **Not “more of the same” in terms of outreach**
 - Target wards already the focus of significant outreach since 2004
 - This has doubled the probability of young people entering HE from those communities (despite fees increasing from £1k to £9k)
- **But need to reinvigorate proposition via:**
 - More focused targeting
 - Embedding in schools / colleges, with funding to support
 - Increased focus on Higher / Degree Apprenticeships and Employer-sponsored routes: Low / No Debt options
 - Input from FECs with HE and third-sector organisations
 - Greater focus on parents around affordability and long-term career benefits

NCOP in the West Midlands

Shropshire and Staffordshire:
19,525 target learners.
£8,403,623



West Midlands: 31,580 target
learners. £13,591,274



Herford, Worcester and Warwickshire:
4,735 target learners. £2,037,098

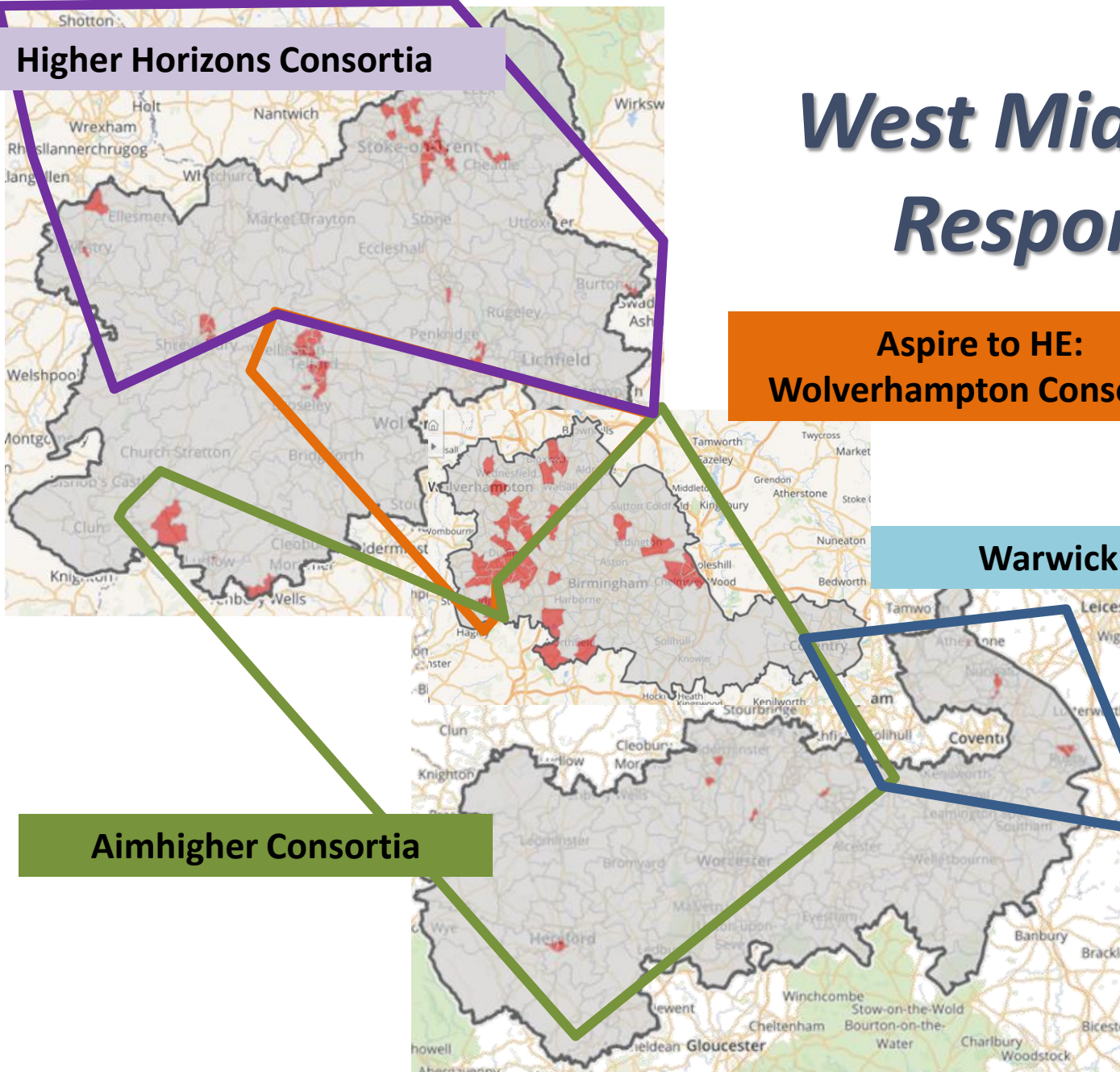
Higher Horizons Consortia

West Midlands Response

**Aspire to HE:
Wolverhampton Consortia**

Warwick Consortia

Aimhigher Consortia



Aimhigher West Midlands

- 6 universities
- 14 colleges
- £8.5 million bid to support:
 - Circa 80 schools and colleges
 - 6,500 students Yr 9 to 13 over 4 years
- Aim to progress 22.5% into HE by 2020
- Outcome known September 2016
- Programme starts January 2017

A progressive programme



Engaging 8 delivery cohorts.

Delivery Cohorts	2016/17	2017/18	2018/19	2019/2020
1	Yr 9	Yr 10	Yr 11	Yr 12
2	Yr 10	Yr 11	Yr 12	Yr 13
3	Yr 11	Yr 12	Yr 13	
4	Yr 12	Yr 13		
5	Yr 13			
6		Yr 9	Yr 10	Yr 11
7			Yr 9	Yr 10
8				Yr 9

An emphasis on low debt HE

Go on...
Hit your
thumb!

3 million new
Apprenticeships
by 2020!

Examples of apprenticeship standards available or in development

 Junior Journalist Media	 Aerospace Manufacturing Fitter Aerospace	 Dental Laboratory Assistant Dentistry	 Software Developer Digital	 Nuclear Welding Inspection Technician Nuclear
 Laboratory Scientist Life & Industrial Sciences	 Bespoke Tailor and Cutter Bespoke Tailoring	 Chartered Surveyor Surveying	 Solicitor Law	 Professional Accountant Accountancy

For schools and colleges?

Schools / college with high # / % of NCOP students:

- Funding for a named coordinator (spinal point)
- An engagement budget (transport and staff cover)
- An Aimhigher Graduate Ambassador
- Undergraduate mentors
- Wrap-around programme of new outreach activities e.g. Roadshows, large scale events

Schools / college with some NCOP students:

- Access to wrap around programme

Schools / college with no NCOP students:

- Access to existing outreach activity
- Aimhigher mentoring and summer schools become free of charge
- <https://www.surveymonkey.com/r/2HVKFXK?sm=fduHE4vrJx2QFGaN9G5MGQ%3d%3d>



Q+A

- *Do you recognise the need for NCOP?*
- *What challenges do you face in trying to raise the aspirations of disadvantaged students?*
- *What new activity / support would help?*