

Teacher Training

Georgie Linton-Smart



Career Overview – Why teach?

- Rewarding - chance to make a real difference to a child
- A secure profession
- A varied role
- A life long learner
- Long holidays! Up to 13 weeks a year (fixed)
- Good salaries and pension scheme
- Flexible working opportunities





What is the Teacher's role?

- Knowing each pupil and understanding how children learn
- Knowing and understanding the subjects, policies and frameworks informing the curriculum
- Planning the pupils' learning
- Monitoring, supporting, assessing pupils' progress
- Managing the learning environment



Outside the classroom...

- NOT 9am - 3.30pm
- Planning, marking and preparation, displays
- Reports, parents evenings, staff meetings
- Voluntary out of school clubs e.g. sports coaching, music, homework clubs
- Attending staff development courses (inset days)



What do teachers earn?



Teachers' salaries

- Starting salary of **£21,588**
- (£27,270 in inner London)
- Main pay scale **£21,588 - £33,552**
- Post-threshold pay scale **£34,181 - £36,756**
- - Typically after 6 years of teaching



Teachers' salaries



- Opportunities for progression
- Extra responsibilities can give you up to an extra £12,517
- Including:
 - Taking on additional teaching & learning responsibility e.g. Heads of subject, Heads of year
 - Responsibility for specific areas e.g. Special Educational Needs, Pastoral care





Other Benefits

- Continuing professional development
- During induction year – individual induction programme of guidance and monitoring
- Individual development
- E.G: Training as mentor to support NQT's
- Postgraduate development e.g. Masters in Teaching & Learning



What qualifications do you need to become a teacher?



To teach in the UK you need...

- 1) Pass the Professional Skills Tests
- 2) A Relevant Teaching Degree
- 3) Qualified Teacher Status (QTS)



3 main routes to gain a degree and QTS:

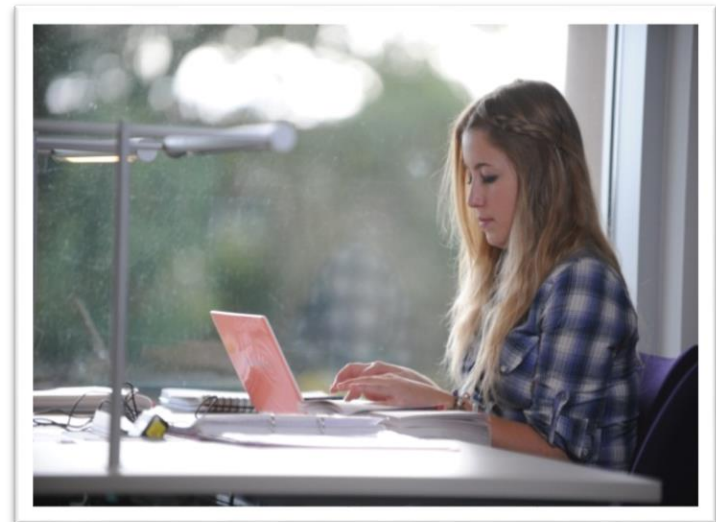
1. **Initial Teacher Education** courses- Degree in teaching with QTS: **Undergraduate course**





Entry requirements for ITE courses

- 10 days minimum classroom experience in a state school setting
- At point of application*, learners must have GCSEs in:-
Maths, English and Science (**Primary Education**)
- Pass QTS Tests



3 main routes to gain a degree and QTS:

2. Post Graduate Certificate in Education (PGCE)

1 year course after a degree to gain QTS

3 – 4 Year Degree

Primary – Preferably study a national curriculum subject

Secondary – Study at least 50% of your degree in the subject you want to teach



1 year PGCE to gain QTS
For Primary or Secondary

Entry requirements for PGCEs

- Normally need 2:1 in your (relevant) degree or above
- 20 days minimum experience in a state school classroom setting
- At point of application, learners must have GCSEs in:-
 - Maths, English and Science (**Primary Education**)
 - Maths and English (**Secondary Education**)



Newman
University
Birmingham

3 main routes to gain a degree and QTS:

3. School Direct (1 year course)

- Two programmes: **Salaried & Unsalaried**
- School Direct (salaried): £15,000-£25,000 as an unqualified teacher
- Bursaries available up to £25,000
- School & University provide partnership programme



The National Curriculum

- English
- Maths
- Science
- Art and Design
- Design and Technology
- Geography
- History
- Information Technology
- Physical Education
- Religious Studies
- Languages
- Music

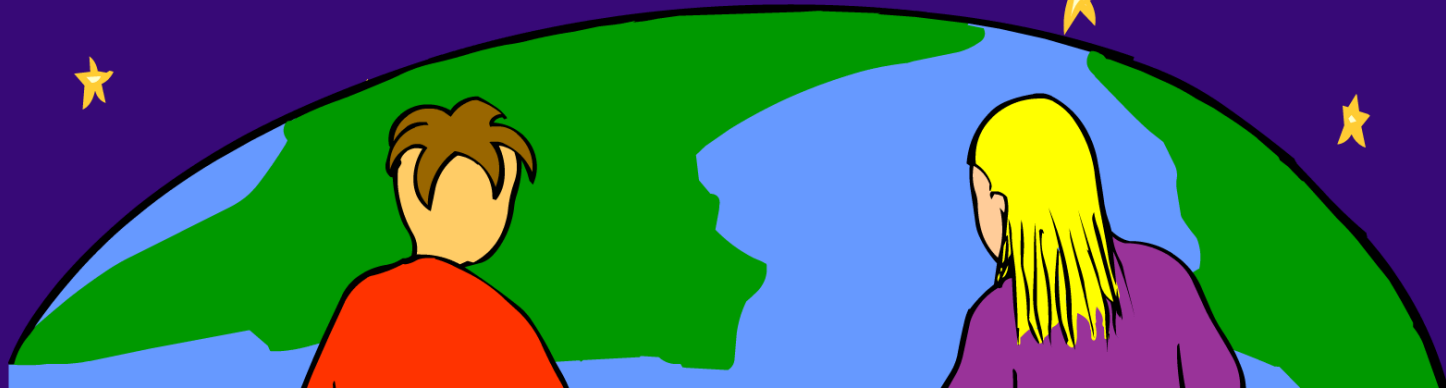


Taster session activity



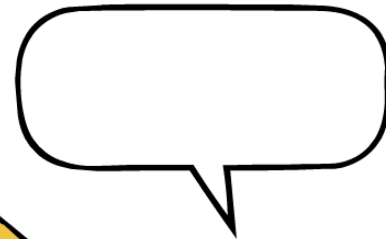
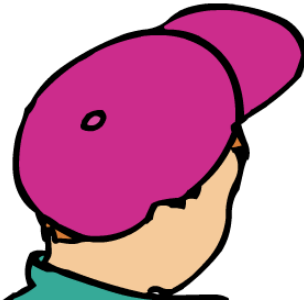
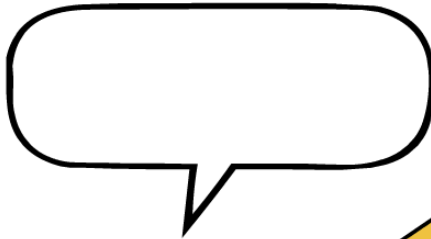
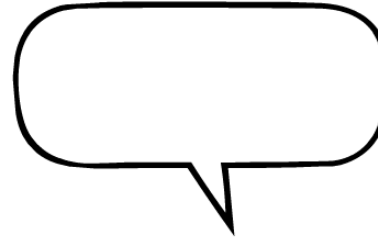
Concept Cartoons

In Science Education





What will happen to the weight if you dissolve some sugar in the tea?



**5 minutes to pick a
point of view and
discuss**





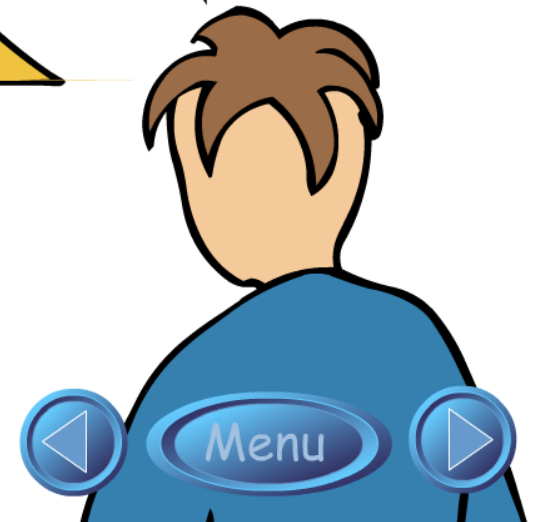
What will happen to the weight if you dissolve some sugar in the tea?

The sweet tea will be lighter than the tea and sugar separately



The sweet tea will be the same weight as the tea and sugar separately

The sweet tea will be heavier than the tea and sugar separately



The Answer

A common misconception is that when substances dissolve they just vanish. Even though the sugar may be invisible when it is dissolved, the total weight of the substances in the tea and sugar does not change. This is why the tea tastes sweet, since the sugar is still present but invisible.

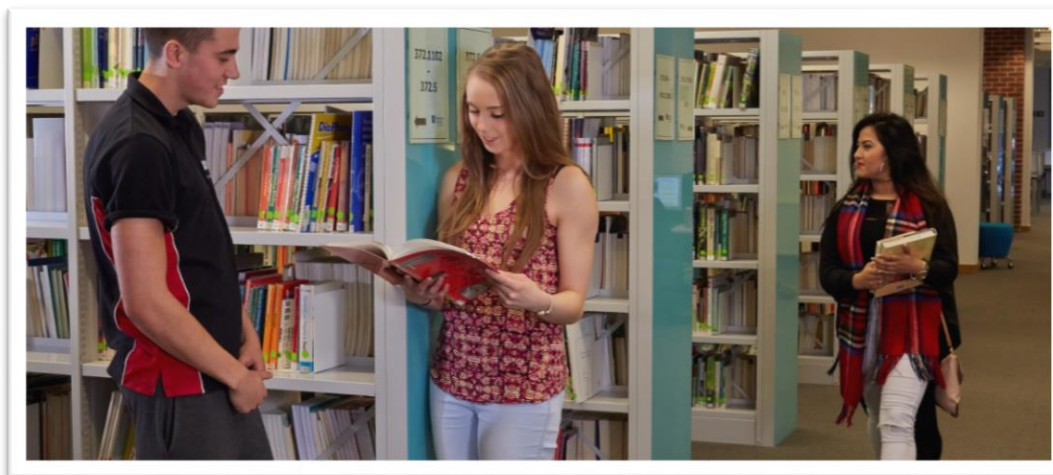
Weighing the tea and sugar before and after dissolving is straightforward and will indicate clearly whether the weight has altered. A lever balance can be used if sensitive scales are not available. The balance can be levelled with tea and sugar separately on one side, then the sugar is dissolved in the tea and the balance checked to see if it has altered. Completely evaporating some very sweet tea (eg in a saucer over a radiator) will demonstrate that the sugar is still present in the tea.

Secondary PGCE's –Subject bursaries for 2015/16

Eligibility 2015/16					
	<u>Bursaries</u>				Other
	Scholarships	Trainee with 1st/PhD	2:1/Master	2:2	
Physics	£25,000	£25,000	£25,000	£15,000	£9,000
Maths	£25,000	£25,000	£20,000	£15,000	£9,000
Chemistry, computing	£25,000	£25,000	£20,000	£15,000	£0
Languages	-	£25,000	£20,000	£15,000	£0
Biology	-	£15,000	£12,000	£10,000	£0
Primary maths	-	£12,000	£12,000	£12,000	£9,000
Geography, D&T	-	£12,000	£9,000	£4,000	£0
Music	-	£9,000	£4,000	£4,000	£0
English, history, RE, primary	-	£9,000	£4,000	£0	£0

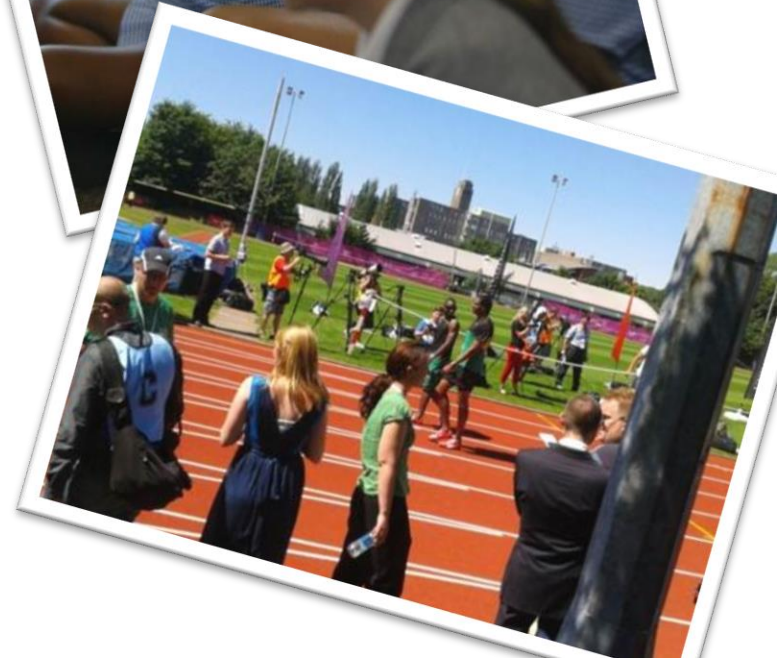
Newman University Application Statistics

Course	Number of places	Applications
ITT Primary	92 (7 deferred)	1159
PGCE Primary	147	453
PGCE Secondary English	24	122
PGCE Secondary PE	18	82
PGCE Secondary RE	18	81



Summary...

- All teaching courses are very competitive
- Work experience is essential
- Practice your Numeracy and Literacy skills prior to interview: www.education.gov.uk



www.education.gov.uk/get-into-teaching/
www.ucas.co.uk
www.newman.ac.uk



Newman University Open Days 2016



Saturday 2nd July 2016

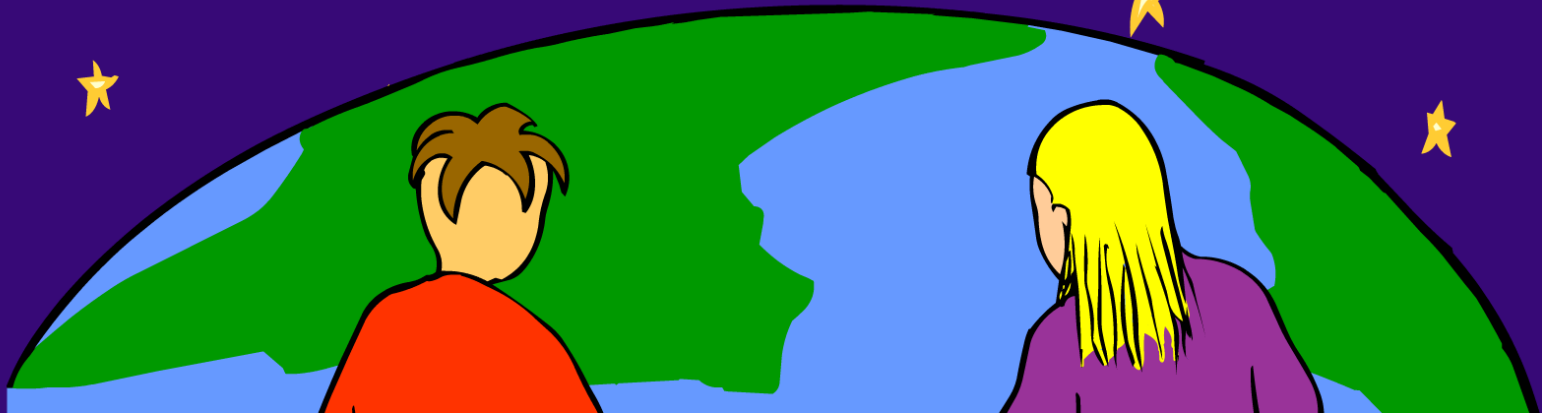
Saturday 16th July 2016

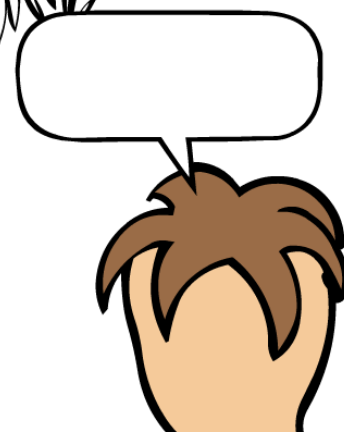
Saturday 8th October 2016

Friday 11th November 2016

Concept Cartoons

In Science Education



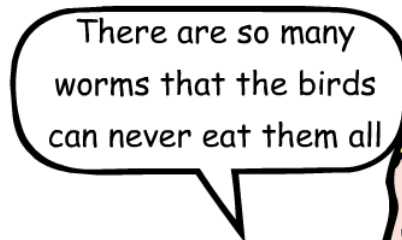




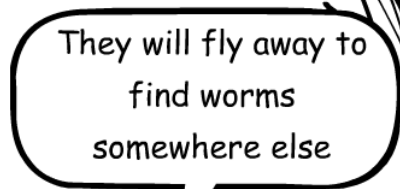
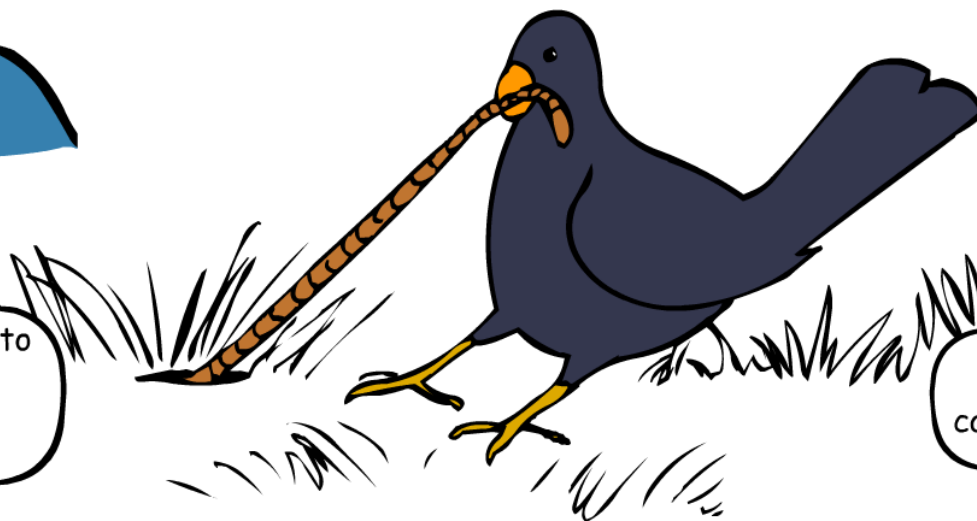
**5 minutes to pick a
point of view and
discuss**



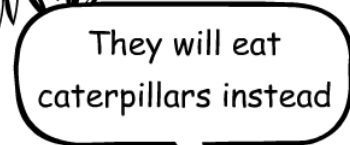
The blackbirds will
starve when they have
eaten all the worms



There are so many
worms that the birds
can never eat them all



They will fly away to
find worms
somewhere else



They will eat
caterpillars instead



The Answer

This concept cartoon recognises that the blackbird may have a number of options available if food becomes scarce. If worms are scarce then the birds may have alternative food sources, though blackbirds are more likely to feed on small invertebrates and seeds rather than caterpillars. They may be able to find new territories somewhere else, but if the population of blackbirds is large elsewhere then all the available territories may already be full.

The situation provides the basis for a long-term observation of blackbirds' feeding habits. What do they feed on during the winter when the ground is frozen and no worms are available? How does this compare with the behaviour of summer migrants which eat the caterpillars that are plentiful in the summer but would starve during the winter when no caterpillars are available?