

Workshop 4:

Changing Pathways to Health Careers

Colleagues from regional universities and NHS organisations discuss
the emergence of new career and progression routes in the sector

Jenny Mullins-White, Careers Consultant, University of
Birmingham



How well do you know the NHS quiz.....

1. How many different careers within the NHS?
2. What percentage of the NHS workforce are doctors, dentists, nurses and midwives?
3. How many people access the NHS every 36 hours?
4. How many people with diabetes in the UK? (2013).

Welcome to NHS Careers

The information service for careers in the NHS in England.

The National Health Service offers a huge range of exciting and challenging opportunities for people who are passionate about making a difference. With more than [350 different careers](#) on offer, there is a job for you no matter what your interests, skills or qualifications.

Further information is available if you're interested in [working or studying elsewhere in the UK](#).

If you are a healthcare professional from outside of the UK, please see our information for [international healthcare professionals](#).



Working in the NHS

Everything you need to know about pay and benefits, flexible working and how to apply for a job.



Real life stories

Dr Francesca Kum has always been drawn to surgery and is enjoying working in ENT. Read her story.



Answers

1. **350 careers** (https://www.jobs.nhs.uk/about_nhs.html)
2. **40%** (Alan Simmons, Skills Show)
3. The NHS deals with **over 1 million patients** every 36 hours.
(<http://www.nhsconfed.org/resources/key-statistics-on-the-nhs>)
4. There are an estimated **3.2 million people** with diabetes in the UK (2013). This is predicted to reach 4 million by 2025.
(<http://www.nhsconfed.org/resources/key-statistics-on-the-nhs>)

Health Education England (HEE)

- 1. Enough jobs must be created in the right place to deliver the care required (demand)
- 2. Enough staff with the right skills and behaviours must be available to fill the jobs created (supply)

Health Education England (HEE) to help improve the quality of care by ensuring workforce has:

**the right numbers, skills, values and behaviours
to meet the needs of patients**

Landscape



- In-depth review of the acute medical care workforce February 2015 – looking 20 years ahead <http://www.cfwf.org.uk/publications/in-depth-review-of-the-acute-medical-care-workforce>
- More demand for emergency medicine and GPs
- Post Francis report; values based recruitment
- Development of new roles e.g. Physician Associate

Medical recruitment

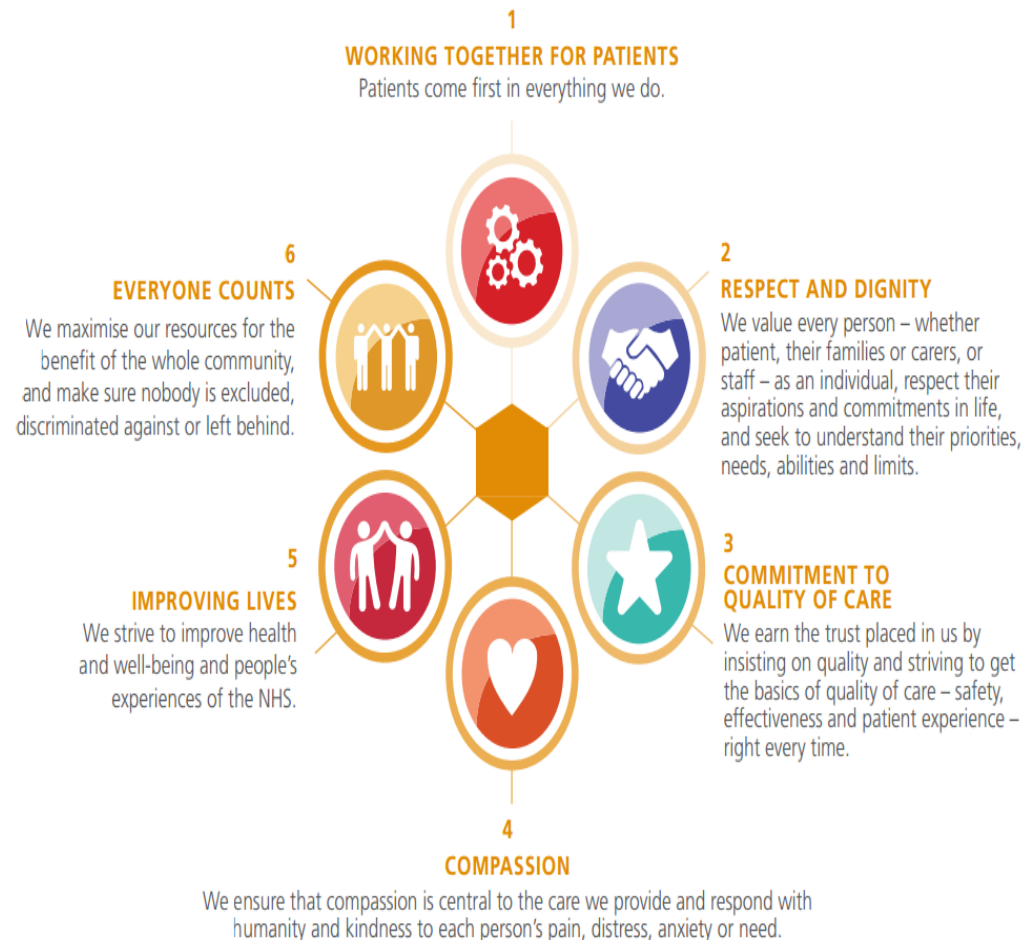
- Medical students who start university 2015 - GPs by 2025– consultants in 2028. **What will health care look like then?** Highest growth of consultants in Emergency Care workforce: yet service has struggled to keep pace with demand. Greater need for GP to maintain primary care service.
- **Routes to Profession (R2P)** programme aims to improve the knowledge, understanding and progression of underrepresented groups into professions. Year 12 students receive: tailored careers advice, UCAS application and interview support, guidance on relevant work placements, the opportunity to apply for work experience at the Universities Cardio Vascular Labs, mentoring by current medical students and the opportunity to shadow medical students



Values based recruitment

In the wake of the Report of the Mid Staffordshire NHS Foundation Trust Public Inquiry (Francis, 2013) the NHS and Health Education England developed a **Values Based Recruitment (VBR)** framework to help ensure values based employment .
All students entering NHS funded programmes in Universities are selected for their values as well as their skills and qualifications.

The values of the NHS Constitution



1. Francis, R. (2013) *Report of the Mid Staffordshire NHS Foundation Trust Public Inquiry*

2. NHS/Health Education England (2014) *Values Based Recruitment Framework* NHS

Physician Associate

Physician Associate (formerly known as Physician Assistant) is a rapidly growing healthcare role in the UK, working alongside doctors in hospitals and in GP surgeries. Physician Associates support doctors in the diagnosis and management of patients. They are trained to perform a number of roles including: taking medical histories, performing examinations, analysing test results, and diagnosing illnesses under the direct supervision of a doctor

2 years: typical offer 2:1 in a Life Sciences Degree

Request DVD <http://wm.hee.nhs.uk/our-work/physician-associate/>

UNIVERSITY OF
BIRMINGHAM

<http://www.pulsetoday.co.uk>

19/6/15

UNIVERSITY OF
BIRMINGHAM

Search... Go

University | Alumni | Giving | Working here | News | Events | Visit

Undergraduate | Postgraduate | Research | International | Business

Home / postgraduate / Postgraduate courses / Postgraduate taught degrees / Physician Associate Studies Postgraduate Diploma

- Postgraduate taught study at Birmingham
- Postgraduate Research at Birmingham

Postgraduate courses

- Postgraduate taught degrees
- Postgraduate research degrees
- Doctoral ReSEARCHer Database (Powered by Findaphd.com)
- DR enquiry service
- Combined research and taught
- Continuing professional development
- Distance learning
- Preessional English
- International pre-Masters MOOCs
- How to apply
- Term dates

- Pre-masters programmes
- Pre-Doctoral Certificate
- Postgraduate entry requirements
- Doctoral research entry requirements
- Request a Prospectus
- Postgraduate fees and funding
- Researcher fees and funding
- Postgraduate funding

Physician Associate Studies Postgraduate Diploma

Overview | Course details | Learning and teaching | Employability



We are pleased to announce that applications for January 2016 and May 2016 entry are now open.

Physician Associate (formerly known as Physician Assistant) is a rapidly growing healthcare role in the UK, working alongside doctors in hospitals and in GP surgeries. Physician Associates support doctors in the diagnosis and management of patients. They are trained to perform a number of roles including: taking medical histories, performing examinations, analysing test results, and diagnosing illnesses under the direct supervision of a doctor.

To understand what a Physician Associate does on a day-to-day basis, Health Education England have produced this informative Day in the Life of a Physician Associate video.

Open Evenings

Interested in studying the programme and want to find out more? Visit us on one of our Physician Associate Open Evenings, which will be taking place within the Medical School on the following dates. To register your interest please email us at physicianassociate@contacts.bham.ac.uk

Wednesday 8th July, 7-9pm

Tuesday 25th August, 7-9pm

- Print this page
- Download as PDF
- Register your interest

Apply to study here

Postgraduate Open Day Book now

Questions Find your answers here

Related courses
Physician Associate Studies MSc

Contact

Contact us on 0121 415 8015

physicianassociate@contacts.bham.ac.uk

Follow us on Twitter

Contact us on Facebook

'New deal': 1,000 new physicians associates by 2020

19 June 2015 | By [Jaimie Kaffash](#)

Print | Email | Like | 8 | Tweet | 0 | +1 | 0 | Comments (54) | Save


The health secretary has announced there will be 1,000 new physicians associates working in general practice by 2020 as part of the 'new deal' to alleviate the GP workforce crisis.

Delivering the speech in South London today, Jeremy Hunt also said community pharmacy would be given £7.5m through the £1bn announced in the chancellor's Autumn Statement to help provide extended hours working in practices.

As Pulse has already reported, the new deal will include a £10m fund for struggling practices, which will provide advice and support for practices to stave off closure, as



How to support your students

- ✓ www.stepintothenhs.nhs.uk Quiz, register, access to work experience and emails 
- ✓ YouTube NHS channel
- ✓ Enthusiasm for a career in healthcare and a desire to make a difference and understanding of roles and the values and personal qualities
- ✓ www.nhscareers.nhs.uk (new site summer launch)
- ✓ <http://www.birmingham.ac.uk/undergraduate/advice/west-midlands-schools/routes-to-the-professions.aspx>

R2P: Medicine

R2P: Medicine is delivered by the University's Outreach Office in partnership with the College of Medical and Dental Sciences.

This is a unique opportunity for students to get a real insight into studying medicine at the University of Birmingham as well as receiving advice, guidance and support at key points through their university application process.